

TIIG
INJURY SURVEILLANCE IN THE NORTH WEST OF ENGLAND

ORMSKIRK AND DISTRICT GENERAL HOSPITAL EMERGENCY DEPARTMENT

MONTHLY BULLETIN: OCTOBER 2013 TO SEPTEMBER 2014

This bulletin provides a breakdown of all injury attendances to the Paediatric Emergency Department (ED) at Ormskirk and District General Hospital between October 2013 and September 2014.

During the twelve month period there were 5,152 injury attendances to the ED. The months with the highest number of attendances, calculated as a daily average, were May and June 2014 (17 per day each) compared to December 2013 and August 2014 (10 per day each; **Figure 1**).

There were more males than females attending the ED (males=3,035; 59%; **Figure 1**). Under two-fifths (37%) were aged between 10 and 14 years (n=1,925), while over one-quarter (26%) were aged four years and under (n=1,315) and exactly one-quarter (25%) were aged between five and nine years (n=1,291; **Figure 2**).

Table 1 shows the injury group of attendances to the ED between October 2013 and September 2014. Almost seven in ten (69%) injuries were categorised as 'other' injury (n=3,575) followed by one quarter (25%) of injuries sustained by sport (n=1,310). Road traffic collisions accounted for 4% of attendances (n=192) while assaults (n=41) and deliberate self-harm (n=34) each accounted for 1%.

The referral source to the ED is illustrated in **Table 2**. The majority (93%) of injury presentations were recorded as 'other' (n=4,771) while 3% were

referred by a health care provider (n=134) and 2% self-referred (n=110).

The primary incident locations were a public place (n=1,802; 35%) and the home (n=1,736; 34%; **Table 3**). Furthermore, over one in five (22%) incidents occurred in an educational establishment (n=1,140).

The discharge destination for injury attendances is displayed in **Table 4**. Over seven in ten (74%) attendees were discharged from hospital with no follow-up treatment required (n=3,824) while 11% were referred to the fracture clinic (n=568).

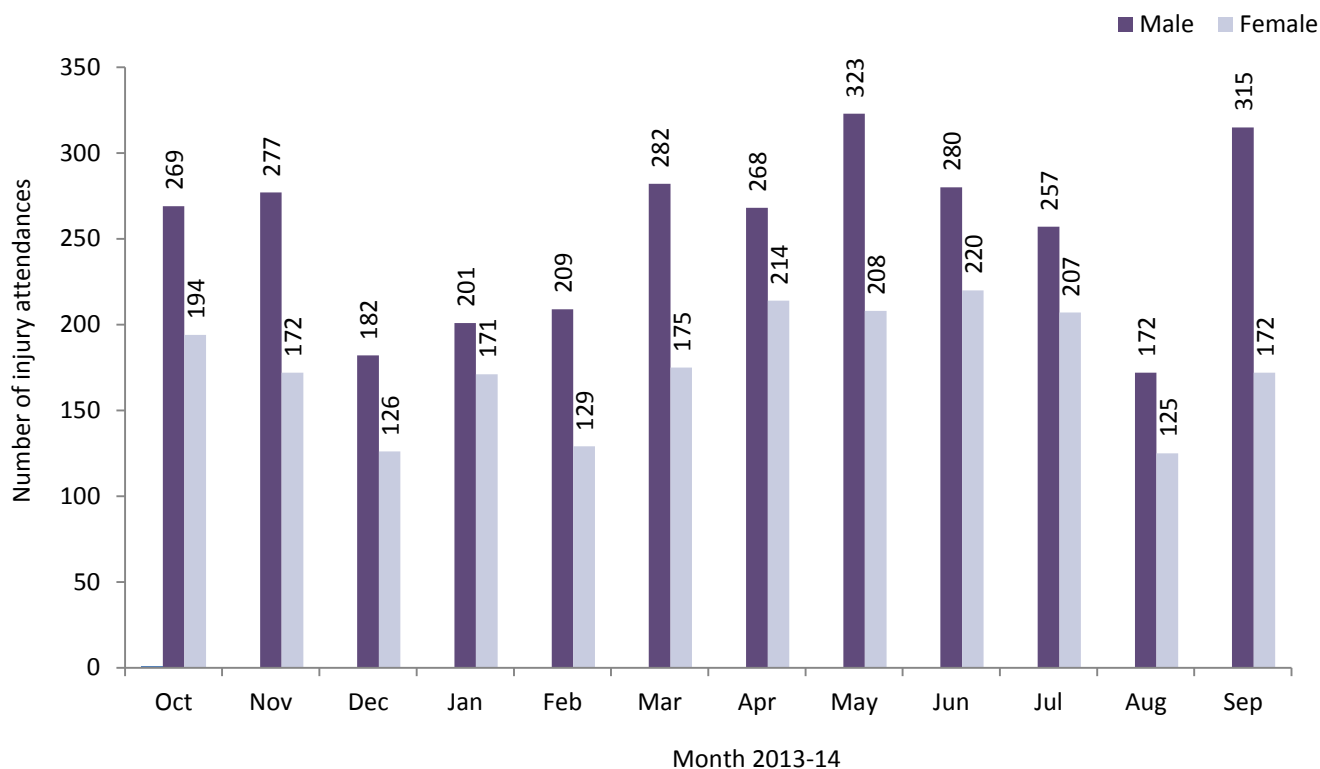
Assault attendances

Between October 2013 and September 2014 there were 41 assault attendees presenting to Ormskirk and District General Hospital ED.

The majority (73%) of assault attendees were male (n=30). Almost three-fifths (59%) were aged between 15 and 19 years (n=24) and 39% were aged between 10 and 14 years (n=16).

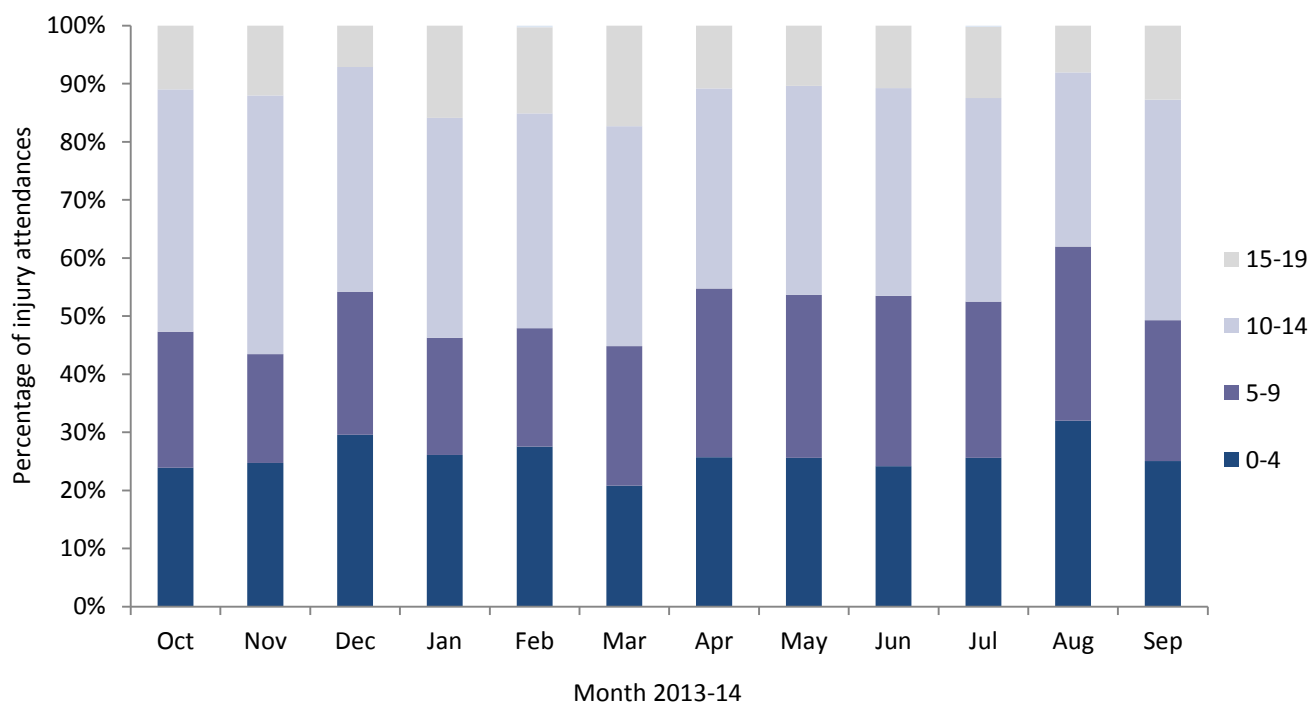
Over three in five (63%) assaults occurred in a public place (n=26) while 17% occurred in an educational establishment (n=7). The majority (76%) of assault attendees were discharged from hospital with no follow-up treatment required (n=31).

Figure 1: ED injury attendances by gender and month, October 2013 to September 2014[^]



[^] There were <5 records where the gender was unknown; these have been omitted from the chart.

Figure 2: ED injury attendances by age group and month, October 2013 to September 2014[§]



[§] There were <5 records where the age was recorded as 20 years and above; these have been omitted from the chart.

Table 1: ED injury attendances by injury group and month, October 2013 to September 2014¹

Injury group	Oct	Nov	Dec	Jan	Feb	Mar	Apr	May	Jun	Jul	Aug	Sep	Total	%
Other injury	306	290	224	266	242	304	332	363	384	329	220	315	3575	69%
Sports injury	134	138	67	87	77	135	119	140	95	110	61	147	1310	25%
Road traffic collision	19	10	12	15	12	12	26	17	<20	21	11	<20	192	4%
Assault	<10	6	***	***	***	<10	***	6	0	5	***	***	41	1%
Deliberate self-harm	***	5	***	***	<10	***	***	5	***	0	***	5	34	1%
Total	465	449	308	372	338	457	482	531	501	465	297	487	5152	100%

Table 2: ED injury attendances by referral source and month, October 2013 to September 2014¹

Referral source	Oct	Nov	Dec	Jan	Feb	Mar	Apr	May	Jun	Jul	Aug	Sep	Total	%
Other	427	407	285	343	304	423	453	489	480	436	286	438	4771	93%
Health care provider: same or other	12	17	8	12	12	19	10	10	9	11	5	9	134	3%
Self-referral	9	8	8	<10	6	0	8	23	6	6	***	27	110	2%
Emergency services	9	6	***	8	9	7	7	<10	***	5	***	***	69	1%
Educational establishment	***	8	***	***	***	***	***	0	***	***	0	6	31	1%
General medical practitioner	***	***	0	***	***	6	***	***	***	***	0	***	28	1%
Police	***	0	0	***	***	***	0	0	***	0	0	***	<10	0%
Local authority social services	***	***	0	0	0	0	0	0	0	0	0	0	***	0%
Total	465	449	308	372	338	457	482	531	501	465	297	487	5152	100%

Table 3: ED injury attendances by incident location and month, October 2013 to September 2014¹

Incident location	Oct	Nov	Dec	Jan	Feb	Mar	Apr	May	Jun	Jul	Aug	Sep	Total	%
Public place	153	120	84	89	105	174	195	212	170	189	129	182	1802	35%
Home	119	113	113	127	104	138	191	196	195	152	137	151	1736	34%
Educational establishment	148	181	81	121	97	110	52	<90	96	66	***	97	1140	22%
Other	45	35	30	35	32	35	44	34	40	58	<30	57	<475	9%
Work	0	0	0	0	0	0	0	***	0	0	0	0	***	0%
Total	465	449	308	372	338	457	482	531	501	465	297	487	5152	100%

Table 4: ED injury attendances by discharge destination and month, October 2013 to September 2014^{1,2}

Discharge destination	Oct	Nov	Dec	Jan	Feb	Mar	Apr	May	Jun	Jul	Aug	Sep	Total	%
Discharged - no follow-up	345	336	224	293	247	353	363	398	361	354	202	348	3824	74%
Referred to fracture clinic	57	48	42	32	25	46	32	59	63	46	41	77	568	11%
Referred to ED clinic	27	28	23	10	19	17	19	20	25	13	13	20	234	5%
Referred to other health care professional	13	13	7	18	13	9	12	15	***	16	8	***	131	3%
Admitted to hospital	10	12	***	***	15	11	13	15	10	11	14	10	127	2%
Transferred to other HCP	7	6	***	6	***	5	18	8	14	5	8	9	90	2%
Discharged - follow-up by other HCP	***	<10	***	***	8	***	12	5	9	6	5	14	74	1%
Referred to other outpatient clinic	***	***	***	6	5	***	8	<10	11	10	***	***	64	1%
Left department before being treated	***	0	***	0	***	11	5	***	***	***	***	***	34	1%
Left department having refused treatment	0	0	0	***	0	0	0	0	0	***	0	0	***	0%
Other	0	0	0	0	0	0	0	0	***	***	***	0	***	0%
Unknown	0	0	0	0	0	0	0	0	0	0	0	***	***	0%
Total	465	449	308	372	338	457	482	531	501	465	297	487	5152	100%

Published January 2015

Trauma and Injury Intelligence Group

Centre for Public Health, Faculty of Education, Health and Community, Liverpool John Moores University,
2nd Floor, Henry Cotton Building, Liverpool L3 2ET

T: 0151 231 4498 | E: tiig@ljmu.ac.uk | W: www.tiig.info and www.cph.org.uk | Twitter: www.twitter.com/tiig_cph

¹ Please note that all numbers less than five have been suppressed (with ***) in line with patient confidentiality. If there is only one number less than five in a category then two numbers have been suppressed to prevent back calculations from totals.

Percentages may not add up to 100% due to rounding.

² HCP = Health care provider.